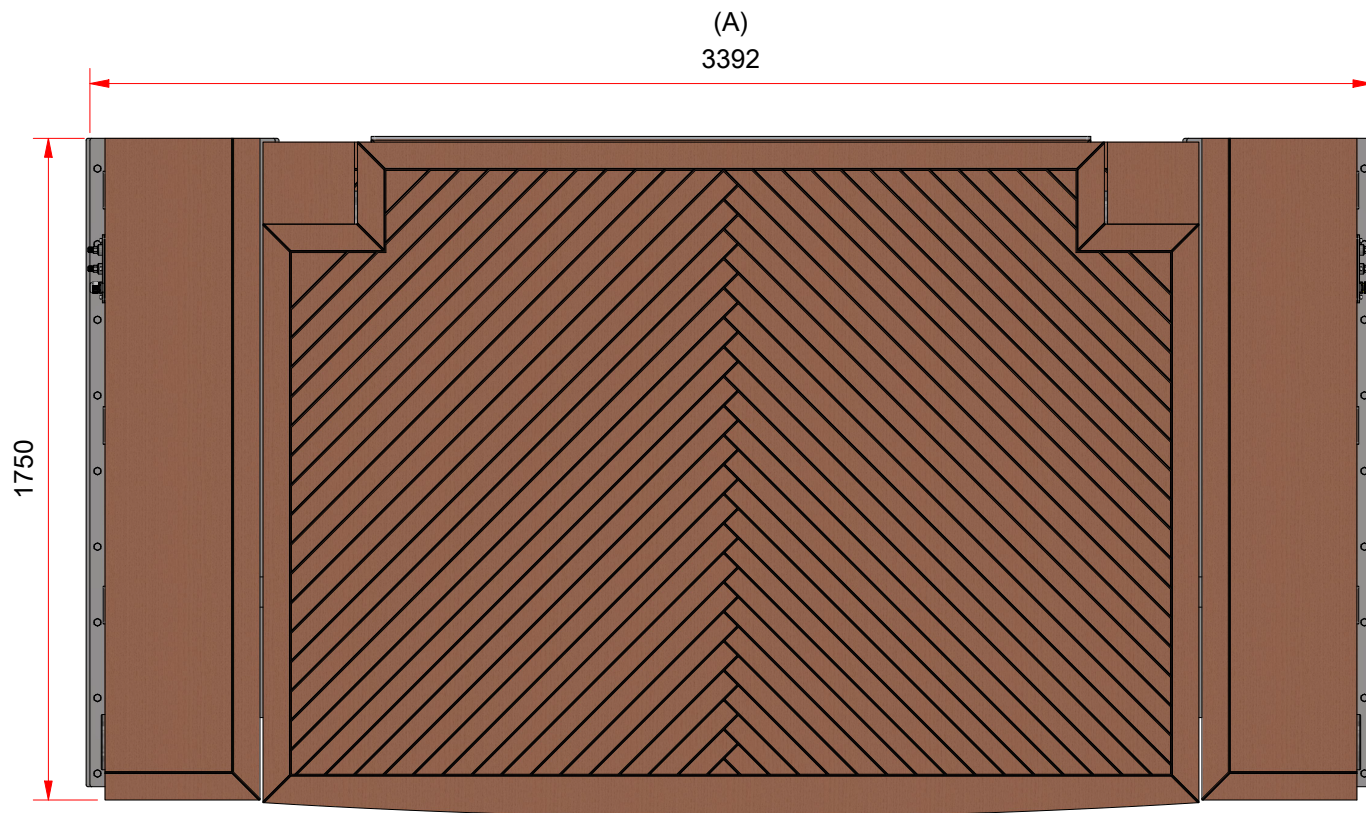
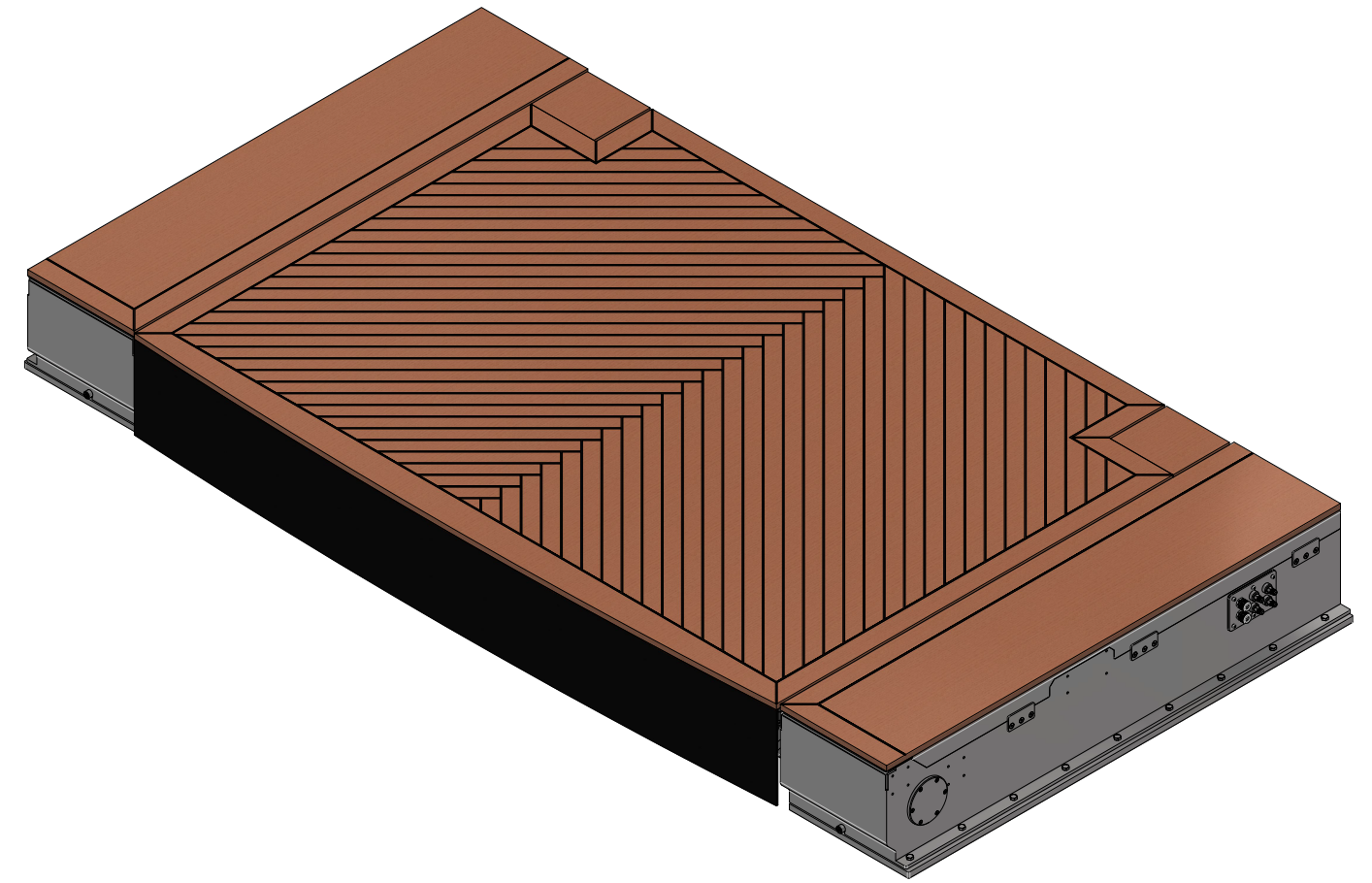
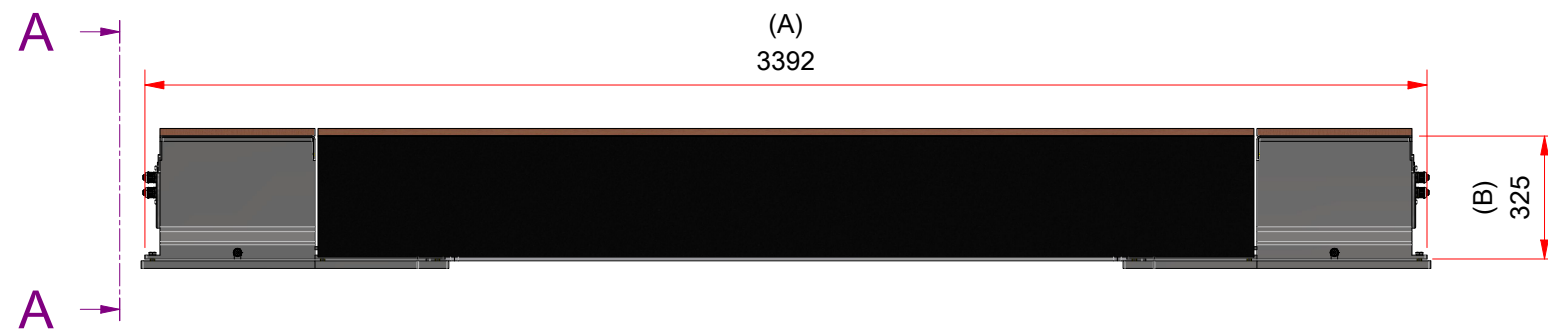
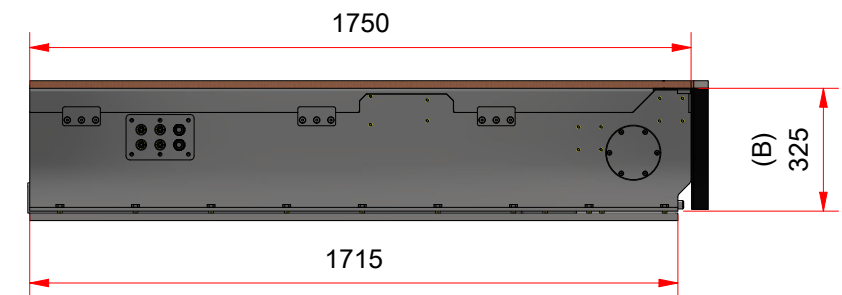


Notes:

- A) Length according to customer's specification.
- B) Standard height of 325mm;
A doubler plate of 20mm is recommended.
- C) Lifting capacity of 750Kg at midpoint of dimension A.

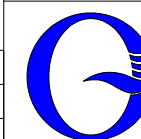


A (1 : 20)



D				
C				
B				
REV.	DATE	DESCRIPTION REVISION		DRAWN
DWG:	ZM-3S-01		CUSTOMER:	
DATE:	2026-03-12	BY: <i>Jose Donaire</i>	PROJECT:	ZM-3S
SCALE:	1 : 20	UNITS: mm	APPROVED:	

ZMotion 3+1



OCEAN GROUP

No. 18 Ho Fa Road, Daliao District, Kaohsiung, Taiwan R.O.C.
Phone: +886 (0) 7787-0899 Fax: +886 (0) 7787-0890

NO.	DRAW NO.	PART NAME	MATERIAL
1	ZM-3S-01	ZMotion 3+1	SS316L
2			